

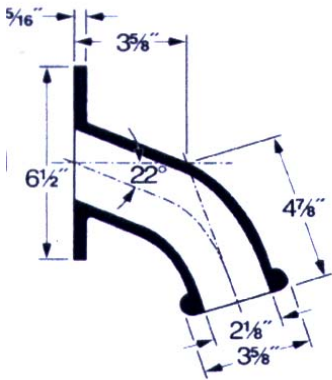


SAN DIEGO SEAL, INC.

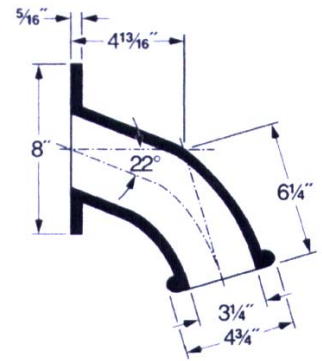
INDUSTRIAL & MARINE SEALING DEVICES

SCUPPER LIPS

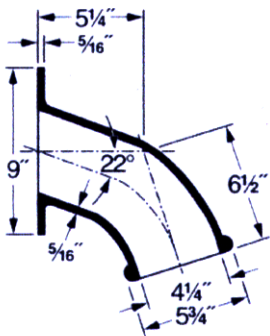
PART NO: 15-1380R
NAVY MOLD: 3570
SHORT NECK



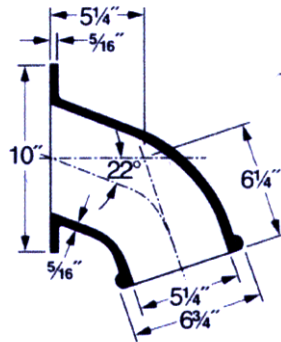
PART NO: 15-673R
NAVY MOLD: 3571
SHORT NECK



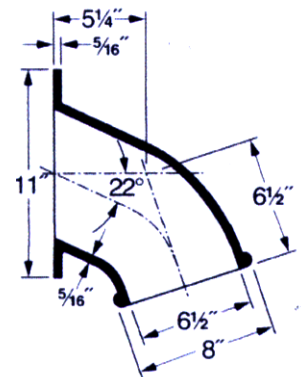
PART NO: 15-1131R
NAVY MOLD: 3572
SHORT NECK



PART NO: 15-1489R
NAVY MOLD: 3573
SHORT NECK



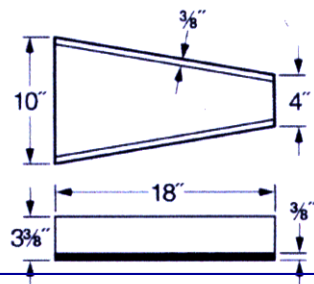
PART NO: 15-3379R
NAVY MOLD: 3574



WATER TRI-EXTENSION
HARDWARE KIT
PART NO: 15-1094RHK

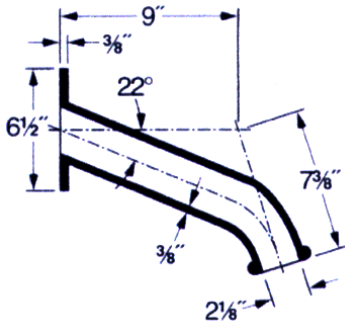


WATER TRI-EXTENSION
PART NO: 15-1094R
NAVY MOLD: 1376-A

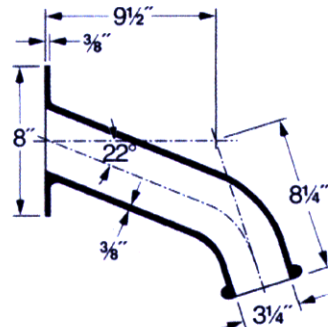


SCUPPER LIPS

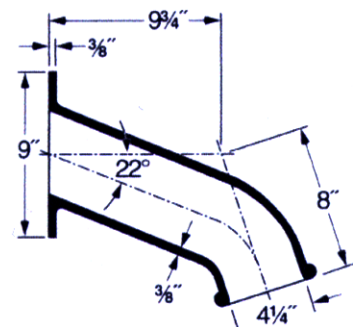
PART NO: 15-4369R
NAVY MOLD: 3575
LONG NECK



PART NO: 15-6035R
NAVY MOLD: 3576
LONG NECK



PART NO: 15-1240R
NAVY MOLD: 3577
LONG NECK

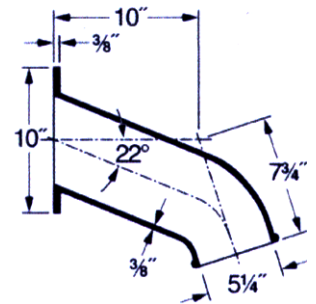


PART NO: 15-4369R
NAVY MOLD: 3575

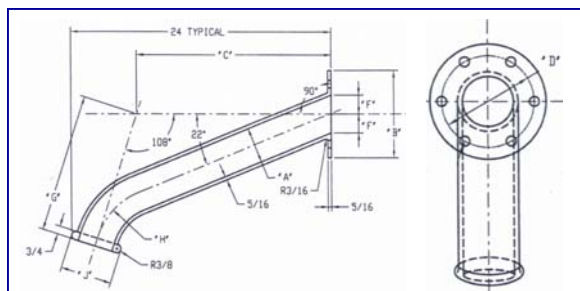
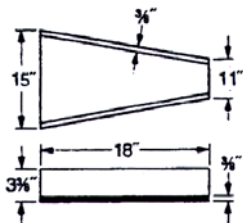
INSTALLED ON
USNS BOB HOPE



PART NO: 15-5752R
NAVY MOLD: 3578
LONG NECK



TRI SCUPPER MODIFIED
PART NO: 15-4610R



MOLD NO.	SIZE	A	B	C	D	E	F	G	H	J
1	2"	2 1/8	6 1/2	18 5/8	5	6	1 5/32	12 3/16	4 1/2	3 5/8
2	3"	3 1/4	B	17 15/16	6 3/8	6	1 3/4	12 11/16	6 1/2	4 3/4

CUSTOM 24" LOCK NECK

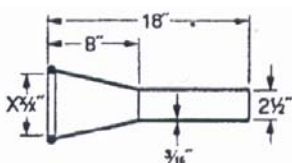
2" FLANGE PN: SDSI24.00X2.00SL
3" FLANGE PN: SDSI24.00X3.00SL



CUSTOM 24" LOCK NECK
INSTALLED ON
USS MAKIN ISLAND LHD-8



PART NO: 15-618R
FUNNEL TYPE



SAN DIEGO SEAL, INC.

7635 RONSON ROAD · SAN DIEGO, CALIFORNIA 92111

TEL: 858-278-3270 · FAX: 858-278-2950

E-MAIL: sales@sandiegoseal.com · VISIT US AT: www.sandiegoseal.com

SCUPPER LIP FLANGES

FLANGE PART NUMBER	FOR SCUPPER LIP PART NO. / MOLD NO.	FLANGE O.D.	NO. OF BOLTS
SDS-3570-75-XXX-YY	15-1380R / 3570 (SHORT NECK) 15-4369R 3575 (LONG NECK)	6-1/2"	6 EA
SDS-3571-76-XXX-YY	15-673R / 3571 (SHORT NECK) 15-6035R / 3576 (LONG NECK)	8"	6 EA
SDS-3572-77-XXX-YY	15-1131R / 3572 (SHORT NECK) 15-1240R / 3577 (LONG NECK)	9"	8 EA
SDS-3573-79-XXX-YY	15-1489R / 3573 (SHORT NECK)	10"	8 EA
SDS-3574-XXX-YY	15-3379R / 3574	11"	8 EA

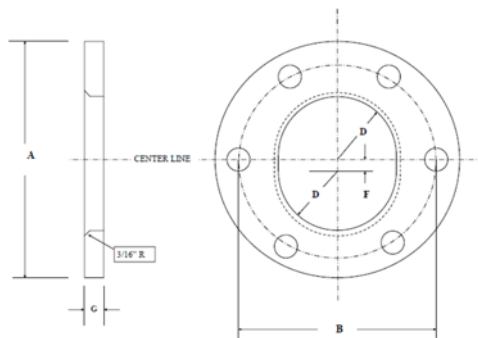
WHEN REQUESTING A QUOTE OR AN ORDER, PLEASE SPECIFY THICKNESS (XXX)
AND TYPE OF MATERIAL (YY)

EXAMPLE: SDS-3571-76-375-SS

AVAILABLE THICKNESSES

375 – 3/8"

500 – 1/2"



TYPES OF MATERIAL AVAILABLE

SS – 316 STAINLESS STEEL

CS – CARBON STEEL

GS – GALVANIZED STEEL