

## LCS - GE LM2500 GTM MODULE KITS



MODULE DOOR SEAL  
KIT #51893



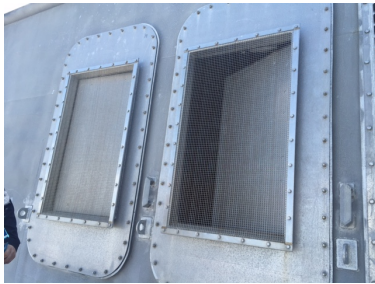
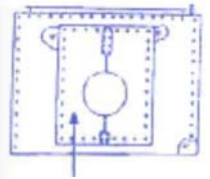
MODULE DOOR WINDOW  
SEAL KIT #13134



SIDE ACCESS PANEL  
SEAL KIT #12642



REAR ACCESS PANEL SEAL  
(BARN DOOR)  
KIT #10763



LCS-2 VARIANT  
BLOW-IN PANEL KIT  
55" X 34"  
KIT NO: SDS-5534-BIP



INTAKE VENT DAMPER  
SEAL KIT #AC3313-42



FORWARD  
WALL  
COVER  
KIT #30667



INLET PLENUM  
INSPECTION  
WINDOW  
KIT #149345



GAS TURBINE BARRIER WALL  
GASKET  
PN: CAP-3471-1



TOP HATCH  
SEAL KIT #20234

## GTM LM 2500 MODULE SEAL REPLACEMENT KIT NSN's

<u>KIT #</u>	<u>TYPE</u>	<u>NSN</u>
10763	REAR ACCESS PANEL SEAL KIT (BARN DOOR)	5330-01-417-2678
12642	SIDE ACCESS PANEL SEAL KIT	5330-01-417-2683
51893	MODULE DOOR SEAL KIT	5330-01-417-2682
13134	MODULE DOOR WINDOW SEAL KIT	5330-01-417-4848
149345	INLET PLENUM INSPECTION WINDOW SEAL KIT	
20234	TOP HATCH SEAL KIT	5330-01-417-2677
30667	FORWARD WALL COVER SEAL KIT	
AC3313-42	INTAKE VENT DAMPNER SEAL KIT	



### ***SAN DIEGO SEAL, INC.***

7635 RONSON ROAD • SAN DIEGO, CALIFORNIA 92111

TEL: 858-278-3270 • FAX: 858-278-2950

E-MAIL: [sales@sandiegoseal.com](mailto:sales@sandiegoseal.com) • VISIT US AT: [www.sandiegoseal.com](http://www.sandiegoseal.com)