



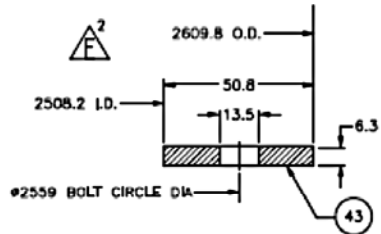
**LCS**

**EXHAUST DUCT and ANCHOR BOTTOM FLANGE GASKETS**

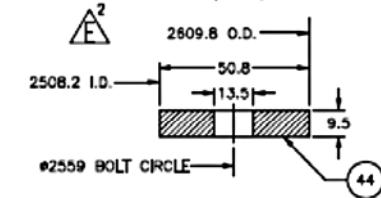
**ANCHOR BOLT ASSEMBLY INSULATION FERRULES**



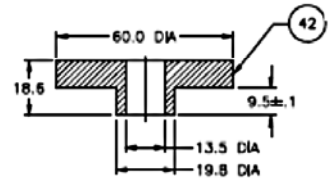
\*815 THERMICULITE FERRULES COME 1/8" (3mm) THICK, FERRULES MUST BE STACKED MINIMUM 3 HIGH TO ACHIEVED PROPER THICKNESS



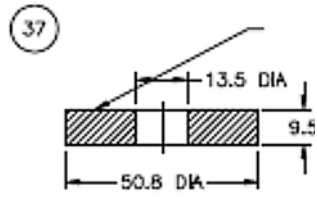
**DETAIL 58-G**  
SCALE: FULL (55-E)



**DETAIL 58-F**  
SCALE: FULL (55-E)

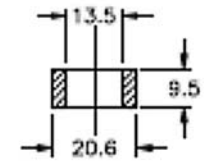


**DETAIL 58-E**  
SCALE: FULL (55-E)



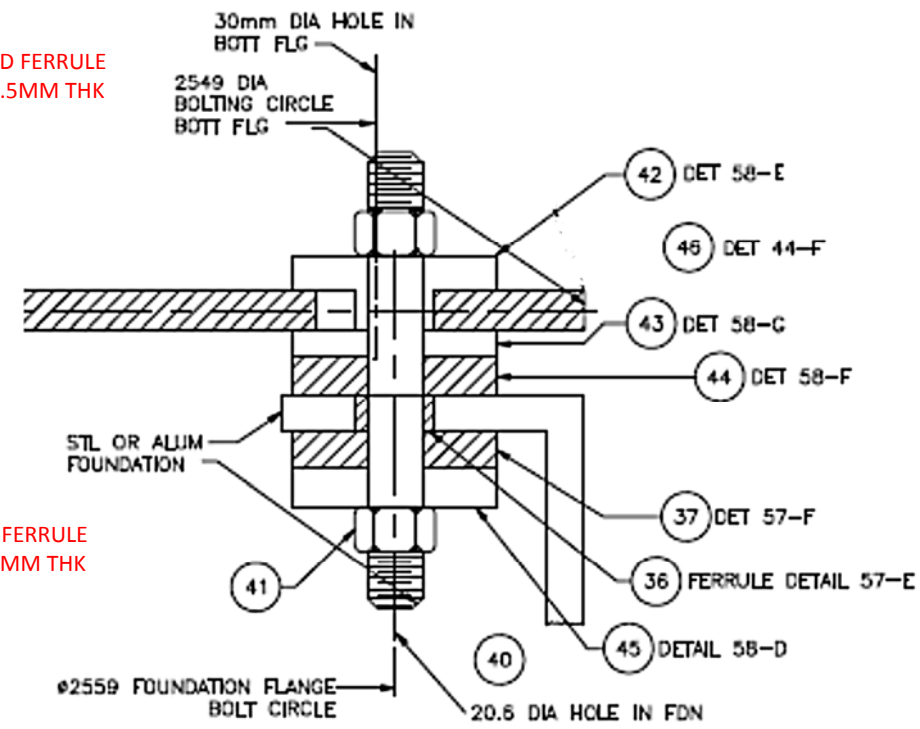
**DETAIL 57-F**  
SCALE: FULL (55-E)

815 THERMICULITE INSULATED FERRULE  
13.5MM ID X 50.5MM OD X 9.5MM THK  
PN: SDS-135X505X95TRM  
DETAIL 57-F



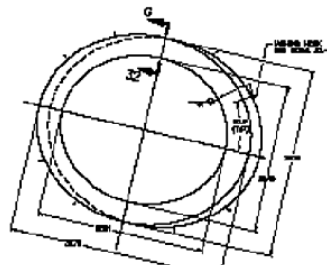
**DETAIL 57-E**  
SCALE: FULL (55-E)

815 THERMICULITE INSULATED FERRULE  
13.5MM ID X 20.6MM OD X 9.5MM THK  
PN: SDS-135X206X95TRM  
DETAIL 57-E

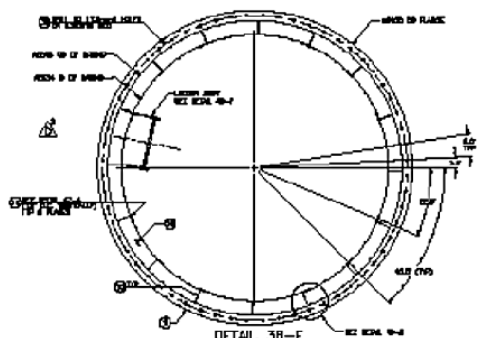


**DETAIL 55-E**  
ANCHOR BOLTING DETAIL  
SCALE: FULL (44-F, 47-F)

LITTORAL COMBAT SHIP PROPULSION GAS TURBINE INTAKE AND EXHAUST A&D ELEVATIONS & DETAILS			
SIZE	DATE	CONTRACTOR	REV
H	2F699	0403-1-259-006	F
PROJ NO:	NAVFAC DRAWING NO:	SCALE: AS NOTED	SHEET
537.11	NAVSEA_NO.		4



**DETAIL 39-E**  
 OF SECTION 39  
 SEE ELEV. 39-C  
 (1-1)



**DETAIL 38-F**  
 OF SECTION 38  
 SEE ELEV. 38-C  
 (1-1)



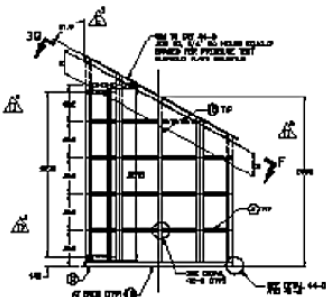
**DETAIL 34-G**  
 OF SECTION 34  
 SEE ELEV. 34-C  
 (1-1)



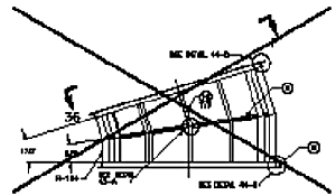
**DETAIL 32-G**  
 OF SECTION 32  
 SEE ELEV. 32-C  
 (1-1)



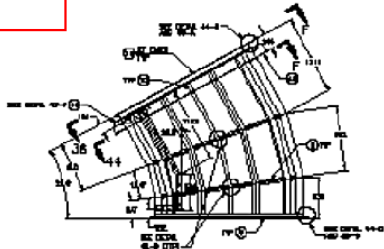
**DETAIL 32-F**  
 OF SECTION 32  
 SEE ELEV. 32-C  
 (1-1)



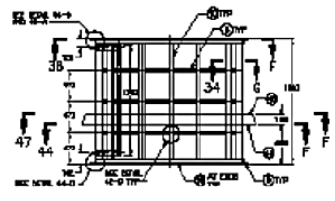
**ELEVATION 38-C**  
 OF SECTION 38  
 SEE DETAIL 38-F  
 (1-1)



**ELEVATION 36-C**  
 OF SECTION 36  
 SEE DETAIL 36-F  
 (1-1)



**ELEVATION 34-C**  
 OF SECTION 34  
 SEE DETAIL 34-G  
 (1-1)

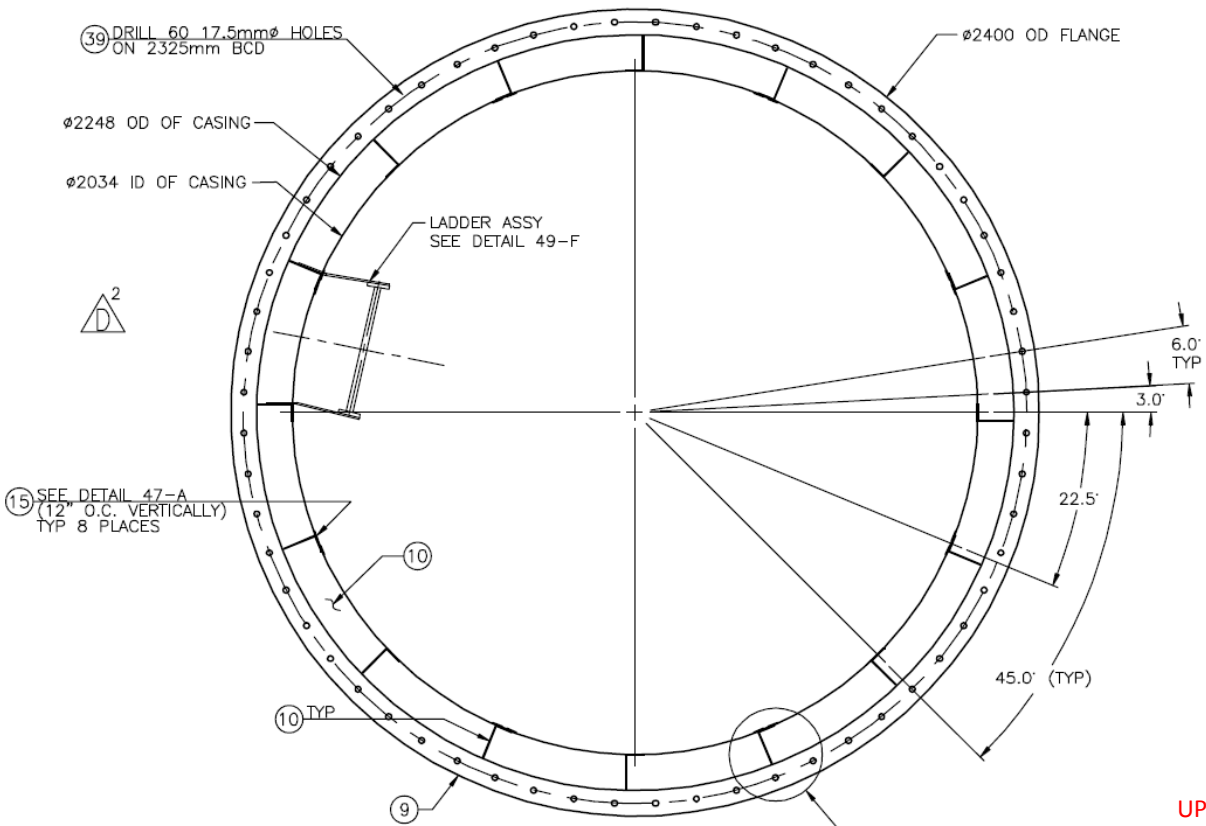


**ELEVATION 32-C**  
 OF SECTION 32  
 SEE DETAIL 32-F  
 (1-1)

SECTION 38-39

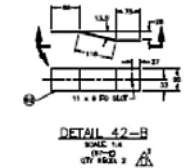
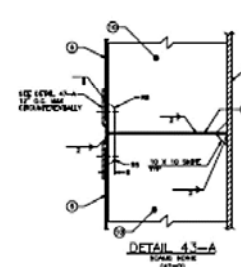
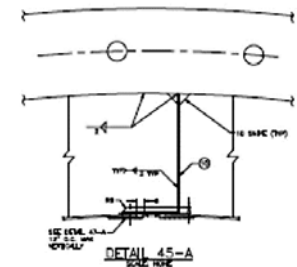
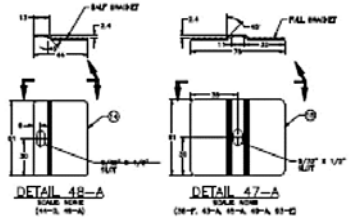
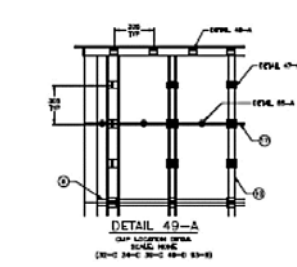
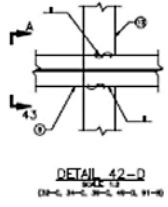
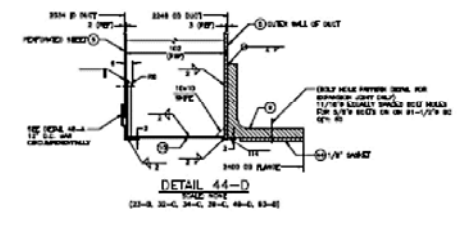
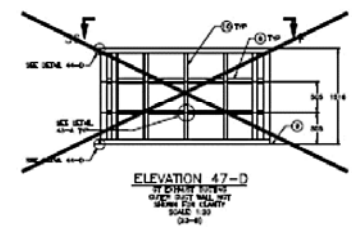
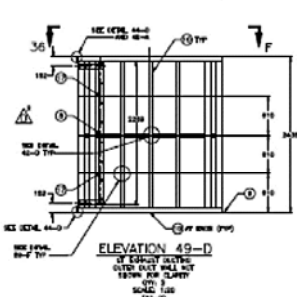
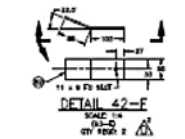
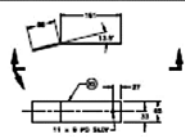
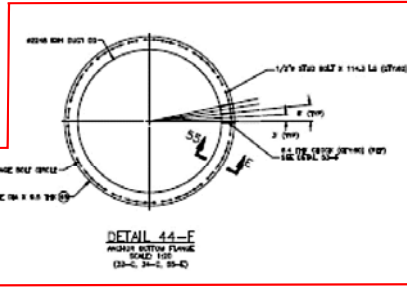
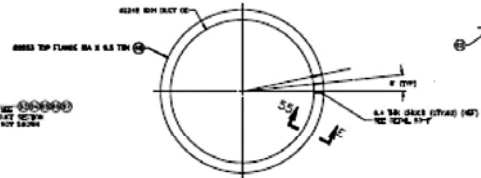
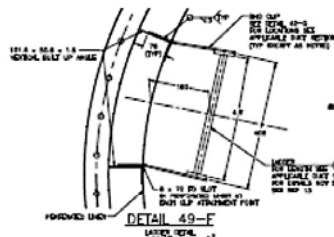
LITORAL COASTING SHIP  
 PROPELLER SHAFT BEARING HOUSING  
 DRAWING NO. 1-229-0016-F  
 H. J. DEGEN (NS) 1-229-0016-F  
 12/7/11 12/28/10

LITTORAL COMBAT SHIP PROPULSION GAS TURBINE INTAKE AND EXHAUST A&D ELEVATIONS & DETAILS			
SIZE	SAC PROJ NO.	CONTRACTOR DWG NO.	REV
H	2F699	0403-1-259-006	F
DRAWING NO.	NAVSEA_NO.	SCALE/AS NOTED	SHEET
53711			4



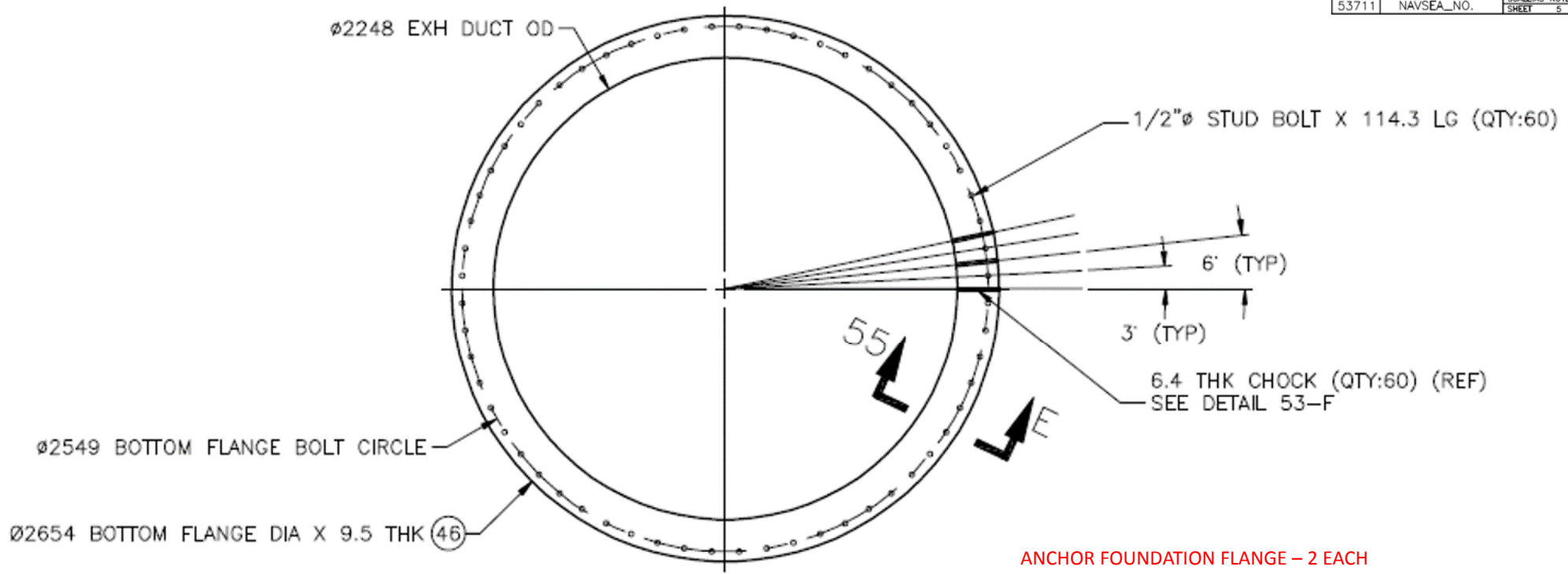
**DETAIL 36-F**  
 CROSS SECTION OF DUCT CASING  
 AND FLANGE BOLTING  
 SCALE: 1:10  
 (32-C, 34-C, 36-C)

**UPTAKE SECTIONS AND EXPANSION JOINT FLANGE – 10 EACH  
 IAW DRAWING DETAIL 36-F  
 FULL FACE GASKET  
 MATERIAL: GRAFTECH GRAPHOIL GRADE GHR or EQUAL  
 6 DOVE TAILED PCS PER GASKET  
 PN: SDS-36F2400-3125SS**



UTLICAL COMBAT SHIP  
PROPULSION GAS TURBINE INTAKE  
NO. 1 DUCT AND  
RESEARCH & TESTS  
DRAWING NO. H2F890(44)1-250-006/F  
33711  
DATE 11/25/54  
SCALE

LITTORAL COMBAT SHIP PROPULSION GAS TURBINE INTAKE AND EXHAUST A&D ELEVATION & DETAILS			
REV	DATE	BY	CHK
H	2F699	0403-1-259-006	E
53711	NAVSEA_NO.	SHEET	5



**DETAIL 44-F**  
 ANCHOR BOTTOM FLANGE  
 SCALE: 1:20  
 (32-C, 34-C, 55-E)

- ANCHOR FOUNDATION FLANGE – 2 EACH
- IAW DRAWING DETAIL 44-F
- FULL FACE GASKET
- MATERIAL: GRAFTECH GRAPHOIL GRADE GHR or EQUAL
- 6 DOVE TAILED PCS PER GASKET
- PN: SDS-44F2248-3125SS