

GE LM2500 GTM MODULE SEAL KITS



DDG-51 CLASS



LCS-2 VARIANT



CG CLASS



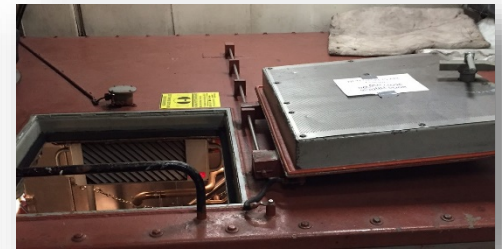
SIDE ACCESS PANEL
SEAL KIT #12642



MODULE DOOR SEAL KIT
#51893



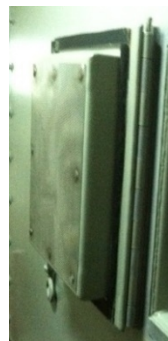
MODULE DOOR
WINDOW SEAL KIT
#13134



TOP HATCH
SEAL KIT #20234



INTAKE VENT DAMPNER
SEAL KIT #AC3313-42



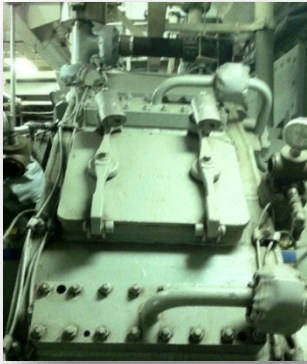
FORWARD WALL
COVER
KIT #30667



INLET PLENUM
INSPECTION WINDOW
KIT #149345



REAR ACCESS PANEL SEAL
(BARN DOOR)
KIT #10763



CG – MRG INSPECTION
COVER GASKET
PN: SDS-1317187-V



DDG – MRG
INSPECTION COVER
GASKET
PN: RG-1600



GAS TURBINE
BARRIER WALL
GASKET
PN: CAP-3471-1

GTM LM 2500 MODULE SEAL REPLACEMENT KIT NSN's

<u>KIT #</u>	<u>TYPE</u>	<u>NSN</u>
10763	REAR ACCESS PANEL SEAL KIT (BARN DOOR)	5330-01-417-2678
12642	SIDE ACCESS PANEL SEAL KIT	5330-01-417-2683
51893	MODULE DOOR SEAL KIT	5330-01-417-2682
13134	MODULE DOOR WINDOW SEAL KIT	5330-01-417-4848
149345	INLET PLENUM INSPECTION WINDOW SEAL KIT	5330-01-442-9748
20234	TOP HATCH SEAL KIT	5330-01-417-2677
30667	FORWARD WALL COVER SEAL KIT	5330-01-442-9747
AC3313-42	INTAKE VENT DAMPNER SEAL KIT	



SAN DIEGO SEAL, INC.

7635 RONSON ROAD • SAN DIEGO, CALIFORNIA 92111

TEL: 858-278-3270 • FAX: 858-278-2950

E-MAIL: sales@sandiegoseal.com • VISIT US AT: www.sandiegoseal.com